

Map for Saturday 13 May 2006

MRF HISTORY TOUR

to

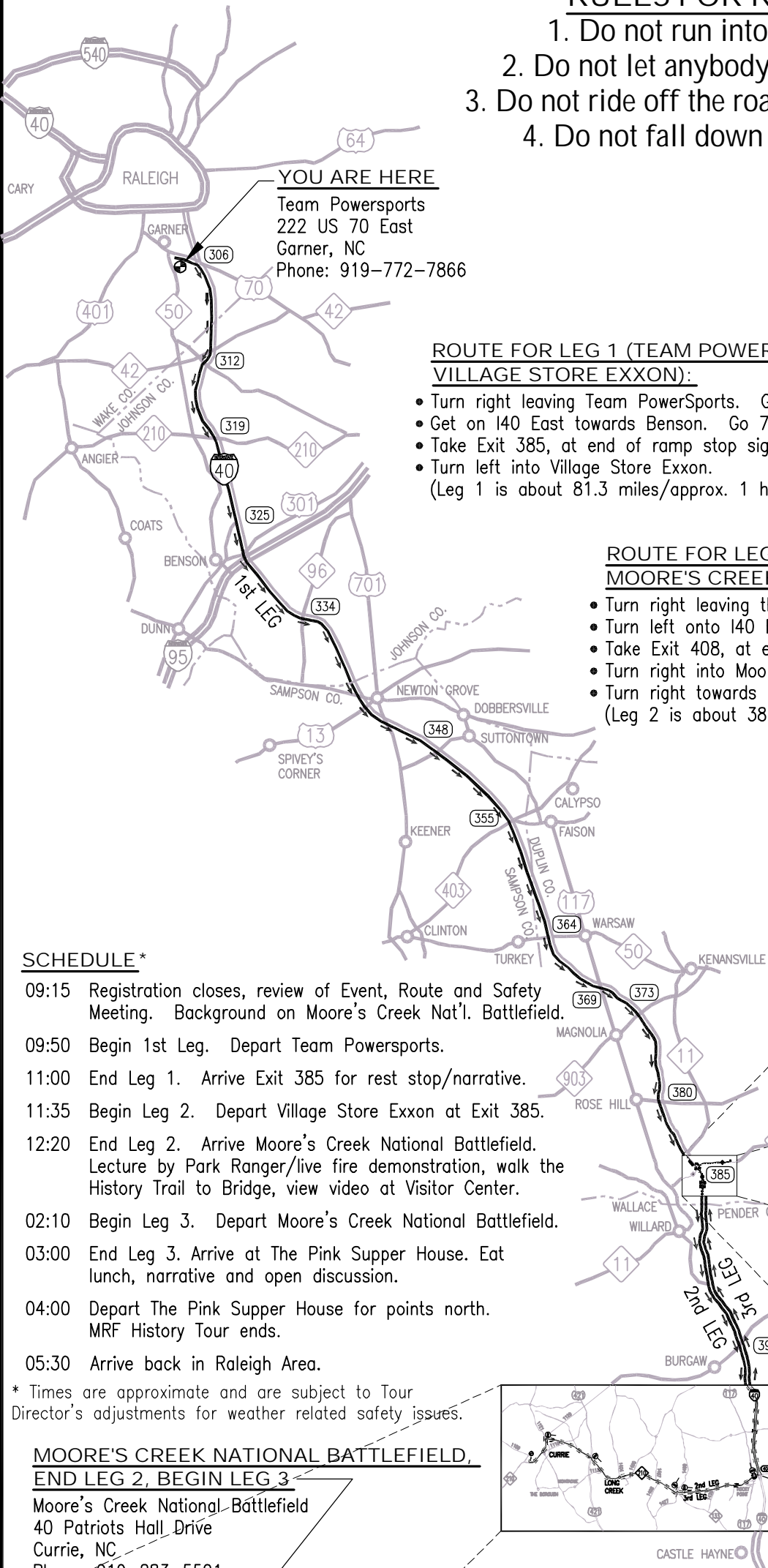
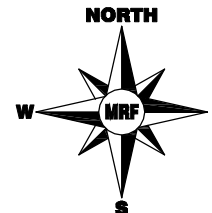
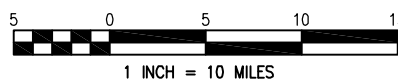
MOORE'S CREEK NATIONAL BATTLEFIELD

RULES FOR RIDING:

1. Do not run into anybody.
2. Do not let anybody run into you.
3. Do not ride off the road and fall down.
4. Do not fall down on the road.

LEGEND

- ROUTE ARROW
- ⊘ STOP SIGN
- ⊘ TRAFFIC LIGHT
- ⊘ INTERSTATE ROUTE
- ⊘ INTERSTATE EXIT NUMBER
- ⊘ US ROUTE
- ⊘ NC ROUTE
- COUNTY LINE
- ⊙ BEGIN/END LEG



ROUTE FOR LEG 1 (TEAM POWERSPORTS TO VILLAGE STORE EXXON):

- Turn right leaving Team PowerSports. Go 1.4 miles.
 - Get on I40 East towards Benson. Go 79.2 miles.
 - Take Exit 385, at end of ramp stop sign turn left onto NC41 East, go 0.8 miles.
 - Turn left into Village Store Exxon.
- (Leg 1 is about 81.3 miles/approx. 1 hr. 10 min.)

ROUTE FOR LEG 2 (VILLAGE STORE EXXON TO MOORE'S CREEK NATIONAL BATTLEFIELD):

- Turn right leaving the Village Store Exxon. Go 0.8 miles.
 - Turn left onto I40 East. Go 22.7 miles.
 - Take Exit 408, at end of ramp stop sign, turn right onto NC210 East. Go 16.0 miles.
 - Turn right into Moore's Creek National Battlefield.
 - Turn right towards Patriots Hall.
- (Leg 2 is about 38.7 miles/approx. 45 min.)

GAS STOP, END LEG 1, BEGIN LEG 2

The Village Store Exxon
I40/Exit 385/NC41 East
Wallace, NC
910-285-9595

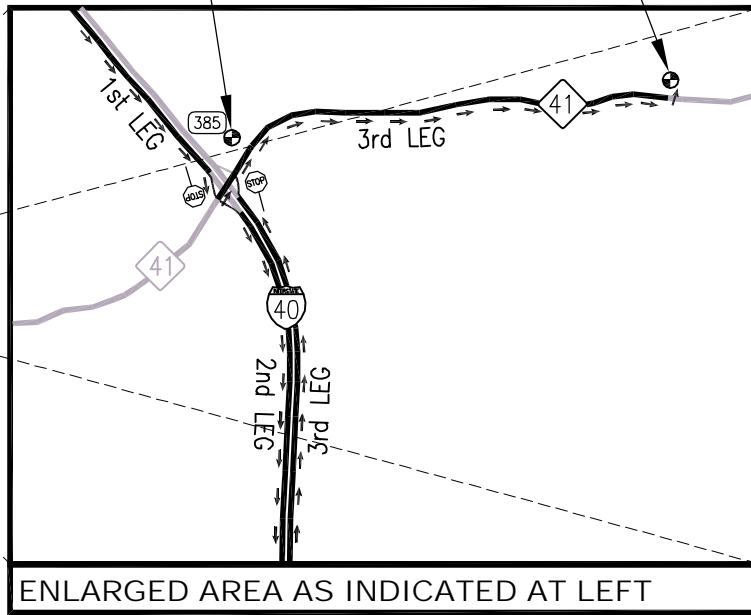
LUNCH STOP, END LEG 3

Pink Supper House
248 Hanchey Road (NC 41)
Wallace, NC
910-289-8858

SCHEDULE *

- 09:15 Registration closes, review of Event, Route and Safety Meeting. Background on Moore's Creek Nat'l. Battlefield.
- 09:50 Begin 1st Leg. Depart Team Powersports.
- 11:00 End Leg 1. Arrive Exit 385 for rest stop/narrative.
- 11:35 Begin Leg 2. Depart Village Store Exxon at Exit 385.
- 12:20 End Leg 2. Arrive Moore's Creek National Battlefield. Lecture by Park Ranger/live fire demonstration, walk the History Trail to Bridge, view video at Visitor Center.
- 02:10 Begin Leg 3. Depart Moore's Creek National Battlefield.
- 03:00 End Leg 3. Arrive at The Pink Supper House. Eat lunch, narrative and open discussion.
- 04:00 Depart The Pink Supper House for points north. MRF History Tour ends.
- 05:30 Arrive back in Raleigh Area.

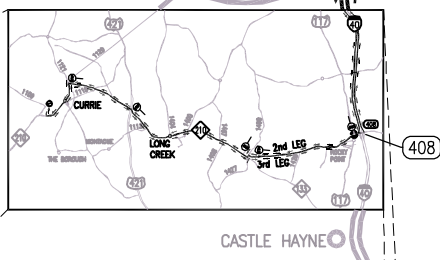
* Times are approximate and are subject to Tour Director's adjustments for weather related safety issues.



ENLARGED AREA AS INDICATED AT LEFT

MOORE'S CREEK NATIONAL BATTLEFIELD, END LEG 2, BEGIN LEG 3

Moore's Creek National Battlefield
40 Patriots Hall Drive
Currie, NC
Phone: 919-283-5591

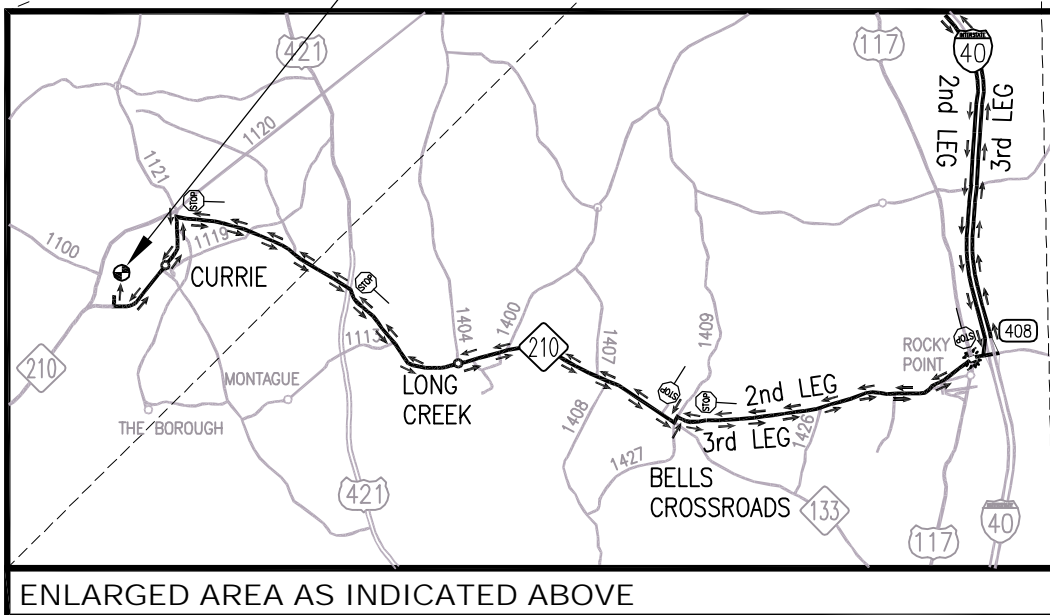


ROUTE FOR LEG 3 (MOORE'S CREEK NAT'L. BATTLEFIELD TO THE PINK SUPPER HOUSE):

- Go back out to NC210, turn left. Follow NC210 East. Go 16.0 miles.
 - Turn left onto I40 West. Go 22.7 miles.
 - Take Exit 385, turn right onto NC41 East. Go 5.0 miles.
 - Turn left into The Pink Supper House.
- (Leg 3 is about 43.5 miles/approx. 50 min.)

CELL PHONE NUMBERS FOR THE DAY:

Tour Director:
Bruce Harris @ 919-389-4422
Security, Sweep, Webmaster and Everything Else:
Vinny Neuman @ 919-522-4922



ENLARGED AREA AS INDICATED ABOVE